




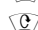
SEAMASTER

SEAMASTER 1948 OMEGA CO-AXIAL MASTER CHRONOMETER SMALL SECONDS 38 MM

Steel on leather strap

Caliber
3113

225.12.43.50.02.001

 Chronometer
 Screw-in crown



WATCH FUNCTIONS

The crown has 3 positions:

1. Normal position (wearing position): when the crown is positioned against the case, the crown ensures that the watch is water-resistant.

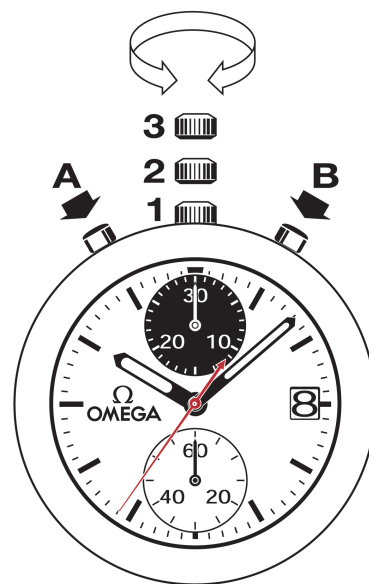
Occasional winding: if the watch has not been worn for 44 hours or more, wind it up with the crown in position 1.

Occasional winding: if the watch has not been worn for 52 hours or more, wind it up with the crown in position 1.

2. Correcting the date: pull the crown out to position 2, turn the crown forwards, then push the crown back to position 1.

NB: the date cannot be corrected between 8:30 pm and 1 am.

3. Time setting: hours – minutes – seconds. Pull the crown out to position 3. The seconds hand will stop. Turn the crown forwards or backwards. Synchronise the seconds by pushing the crown back to position 1 to coincide with a given time signal.



CHRONOGRAPH FUNCTIONS

- **Pusher A:** start – stop, start – stop, etc.
Timing to 1/8 of a second for up to 12 hours.

- **Pusher B:** reset (after a stop).

Note: resetting/zeroing of the sub dials must only be carried out after the chronograph has stopped.