



SPEEDMASTER

SPEEDMASTER 38 CO-AXIAL CHRONOGRAPH 38 MM

Steel on leather strap

Caliber
3330

324.38.38.50.02.001

- Co-Axial escapement
- Si14 silicon balance spring
- Automatic
- Chronometer
- Tachymeter
- Sapphire crystal
- Anti-reflective treatment on both sides
- Watch with diamond(s)
- Water-Resistant to a relative pressure of 10 bar (100 metres/330 feet)



WATCH FUNCTIONS

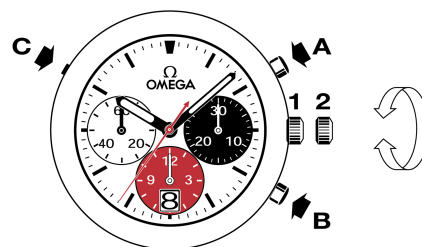
The crown has 2 positions:

1. Normal position (wearing position): when the crown is positioned against the case, the crown ensures that the watch is water-resistant.

Occasional winding: if the watch has not been worn for 45 hours or more, wind it up with the crown in position 1.

2. Time setting: hours – minutes – seconds. Pull the crown out to position 2. The seconds hand will stop. Turn the crown forwards or backwards. Synchronise the seconds by pushing the crown back to position 1 to coincide with a given time signal.

Correcting the date: press the corrector (C) positioned at 10 o'clock.



Timing to 1/8 of a second for up to 12 hours.

TACHYMETRIC SCALES

The desired information is read between the central seconds hand of the chronograph and the corresponding scale, over a maximum duration of 60 seconds.

Example: calculating the speed of a car.

Record the time the car takes to cover a distance of 1 kilometre. Read off the tachymetric scale the speed indicated by the central seconds hand. In this case, the car is travelling at 120 km/h.

