



SPECIALITIES

MUSEUM

White gold on leather strap

Caliber
3203

516.53.38.50.01.001

- Co-Axial escapement
- Manual
- Chronometer
- Tachymeter
- Telemeter
- Sapphire crystal
- Anti-reflective treatment
- Gold 750‰ (18K)
- Limited Edition
- Water-Resistant to a relative pressure of 5 bar (50 metres/167 feet)



WATCH FUNCTIONS

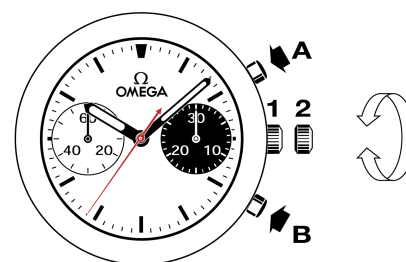
The crown has 2 positions:

1. Normal position (wearing position): when the crown is positioned against the case, the crown ensures that the watch is water-resistant.

Winding: turn the crown forwards until it stops (DO NOT OVERWIND).

Note: do not wind the watch more often than is necessary. For a watch that is worn all the time, a single winding each day will ensure that it functions correctly.

2. Time setting: hours – minutes – seconds. Pull the crown out to position 2. Turn the crown forwards or backwards. Synchronise the seconds by pushing the crown back to position 1 to coincide with a given time signal.



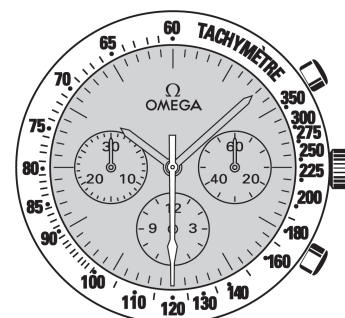
Timing to 1/8 of a second for up to 30 minutes.

TACHYMETRIC SCALES

The desired information is read between the central seconds hand of the chronograph and the corresponding scale, over a maximum duration of 60 seconds.

Example: calculating the speed of a car.

Record the time the car takes to cover a distance of 1 kilometre. Read off the tachymetric scale the speed indicated by the central seconds hand. In this case, the car is travelling at 120 km/h.



TELEMETER SCALES

The desired information is read between the central seconds hand of the chronograph and the corresponding scale, over a maximum duration of 60 seconds. It is possible to make use of the minutes counter by adding 20 km to the distance indicated by the central seconds hand for each minute elapsed.

Example: calculate the distance between your position and an event producing light and sound simultaneously (e.g. a storm).

The chronograph is set off by the detection of light, for example a lightning strike. Then it stops on detection of the sound, the clap of thunder. Here, the storm is 9.9 km away.

